



Elementary Math

Bridges Implementation Update
WWPS Board of Education
November 14, 2022



THANKS!

The growth we've seen already in the few months we've been fully implemented doesn't happen without a GREAT team!



Objectives for Tonight

1. Learn about the progress that has been made since the Board adopted Bridges in Spring 2022
2. Provide a sneak peek into some K-5 classrooms to see Bridges in action and hear from students
3. Share the team's next steps to provide continued support of implementation



Implementation Progress

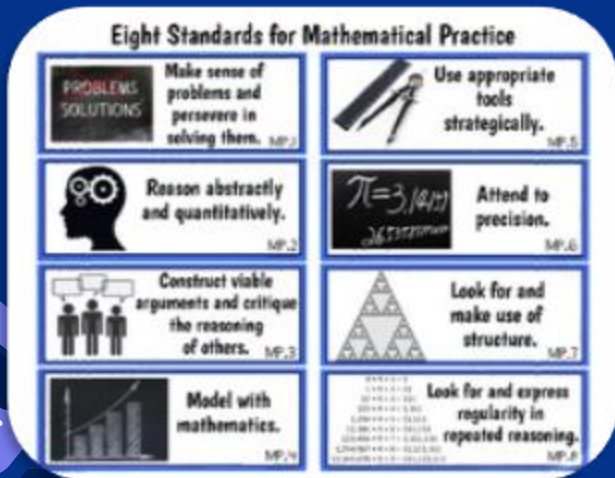
2021-22 SY

- Pilot User Group Feedback
- Inception of Dreambox Ambassador Group



Spring 2022

- Efforts to Bring Greater Awareness of Upcoming Changes
 - Staffing Meeting Time
 - Standards for Mathematical Practice
 - Bridges Preview – Organization & Access
 - Dreambox Use and Impact
 - Family Night – Awareness to Expected Changes
 - Brochure
- Dreambox Student User Challenge



Implementation Progress

Summer 2022

- Getting Started Training – Cohorts A & B
- Title I Math Coach Participation in National & Local PD Opportunities
- Preparing / Ordering / Organizing Materials for Distribution (inclusive of Special Education Needs)
- Grade Level Leader Retreat



Implementation Progress

Fall 2022

- Hitting the Ground Running – Professional Development
 - Differentiated PD during Back-to-School PD
 - Planning Sessions for Number Corner & Bridges with Building Grade Level Teams
 - Election Day : Fluency & Dreambox Learning Sessions
- Rollout of Focused PLC Plan
 - Making Informed Decisions as a Team – Video for Selection of Essential Standards
 - Continuing review and revision of PLC Agenda / Notes
 - Ongoing communication in response to team questions and concerns
 - Report Card Alignment - Creation of Crosswalk Resource Document



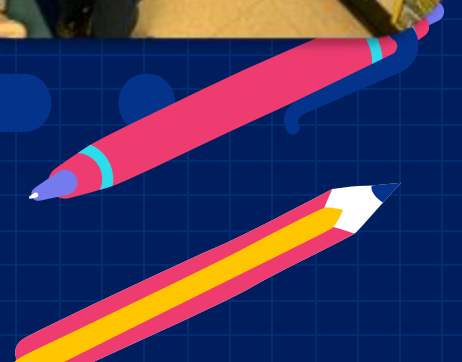
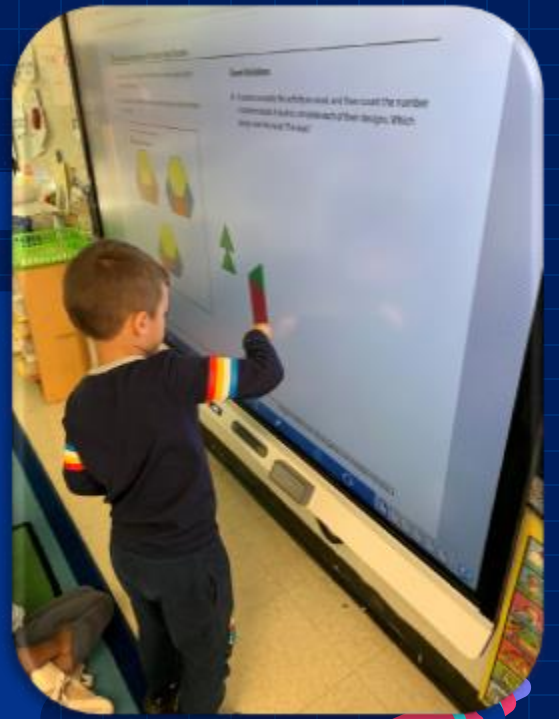
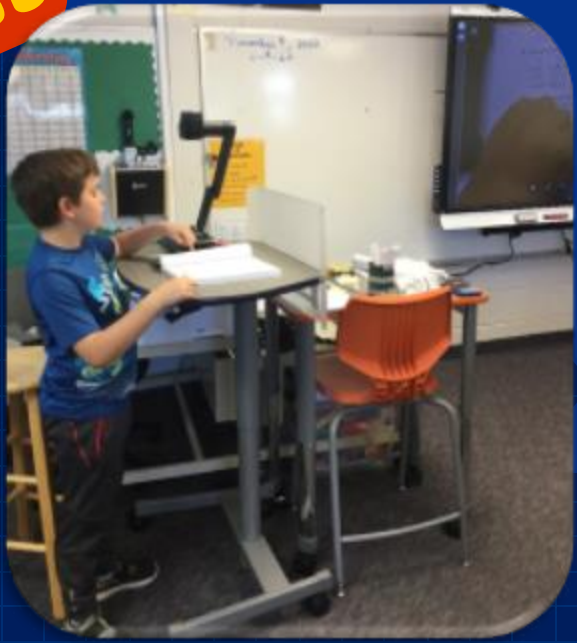
$a + b = c$



**A Picture Is Worth
a Thousand Words**





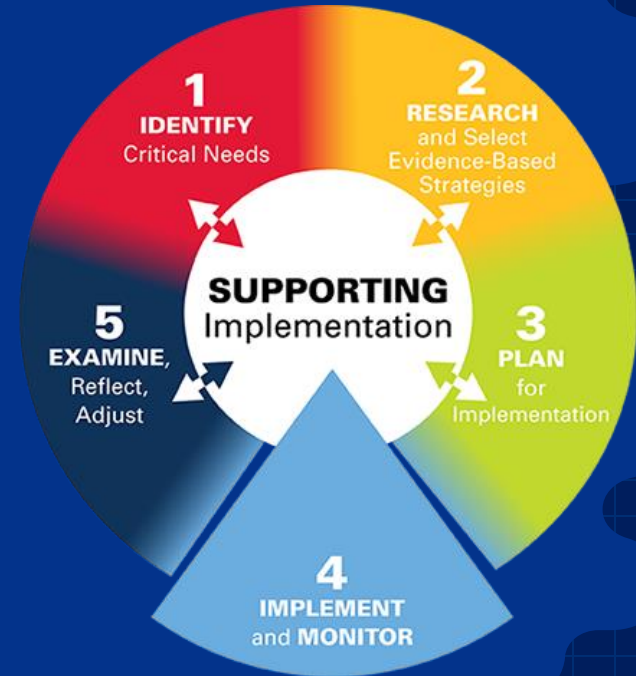




Implementation PROCESS

Ongoing

- Job Embedded Student Centered Coaching – Title I Math Coach
- Collaboration among Elementary Support Team
 - Especially Instructional Technology Coach
- Continuous Reflection & Adaptation
 - Posters, Access to PD (Fluency Bks), Intervention Kits
 - Elementary PLC Process
- Coaches Network within County
- AVMR Training
 - Math Recovery Intervention Specialists
- Monthly administrator Check-Ins
- Outreach and Partnership with MISD
 - Election Day PD



What's Next??

- Integration of Module 8 STEM Unit into WWPS STEM Enrichment
- Refining Collection & Review of Assessment Data– MTSS Process Review
- Use of Intervention Kits - During Day & Extended Day Support
- Internal Dreambox Challenge – Winter 2022/23
- Going Deeper – Use of Data to Inform Tier 1 & 2 Classroom Decisions
- Winter STEAM / Math Family Engagement Event





?!

**Questions /
Comments**

